



Pipe surface temperature sensor ET243

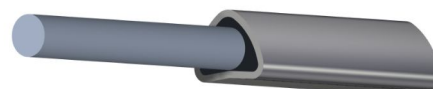
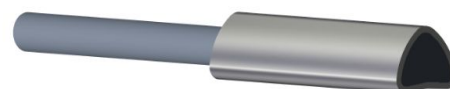
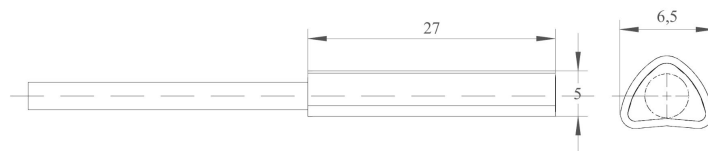


Features

- Operating range -40...80 °C or -30...105 °C
- Pt1000, Pt500, Pt100, PTC or NTC sensor
- Suitable for pipes Ø16...215 mm
- PVC insulation

Specifications

Sensing element options	Pt1000A (standard) Pt500, Pt100, PTC1000, NTC10 etc
Measurement ranges (continuous / peak)	-40...+70 / 80 °C (with LiYY cable) -30...+70 / 105 °C (with LiYwYw cable)
Cable options	2 x 0,22 mm ² LiYwYw, outer Ø 3,3 2 x 0,25 mm ² LiYY, outer Ø 3,7
Cable length	3 m, other options on demand
Cable insulation	PVC
Body	A4 stainless steel
Encapsulation	Polyamide (nylon)
Protection class	IP67
Mounting options	Fixing with nylon cable ties Fixing with hose clamps



Authorized Distributor
APL ASIA CO., LTD.
11/129-132 Moo.5 Lamlukka Rd.,T.Kookut, A.Lamlukka, Pathumthani 12130 Thailand.
TEL. 0-2995-4461-3, FAX. 0-2995-4464
www.apl-asia.com
EMAIL : sales@apl-asia.com
LINE@ : @APL-ASIA